

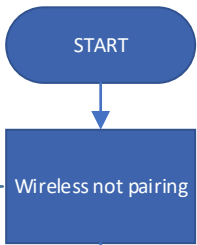
⌘ For instructions on installation and how to pair the wireless system, please refer to the User & fitting guide found on the Brigade website – www.brigade-electronics.com

For optimal positioning of the RX and TX please refer to the User & fitting guide found on the Brigade website – www.brigade-electronics.com

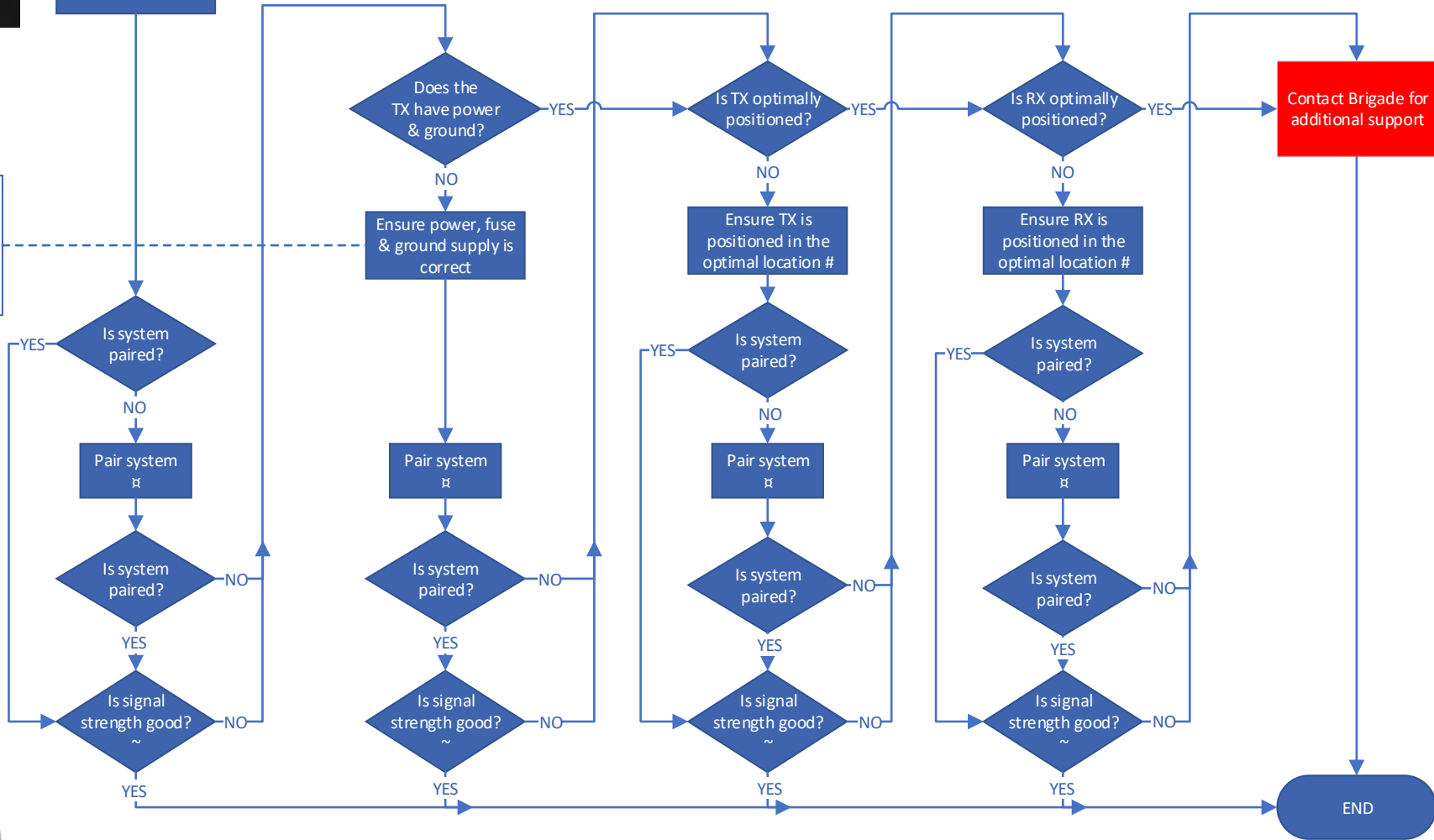
~ Shown in corner of monitor



MANUAL PAIRING REQUIRED



An easy way to check if the TX has power is by covering the IR camera to see if the Infrared LEDs are activated.



Wireless System



RX = Receiver Unit (located in the cab)
TX = Transmitter Unit (located on the trailer)

Title: Wireless not Pairing
Workflow Number: DW0002
Version: 1.0
Product(s): DW-1000TX (4043), DW-1000RX (4044), DW-1001TX (4282) & DW-1001RX (4283)